

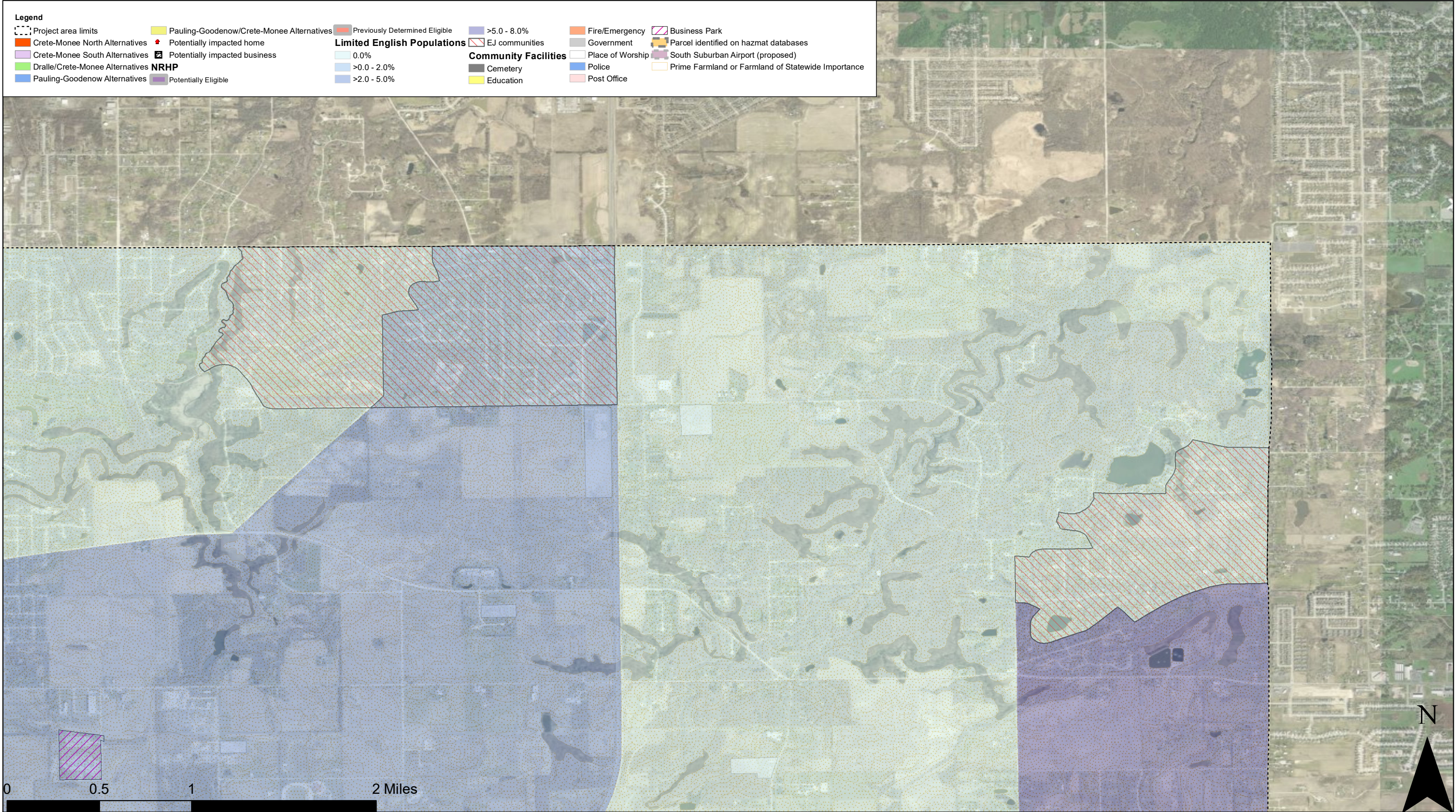
**EASTERN WILL COUNTY
FREIGHT MOBILITY
CORRIDOR STUDY**

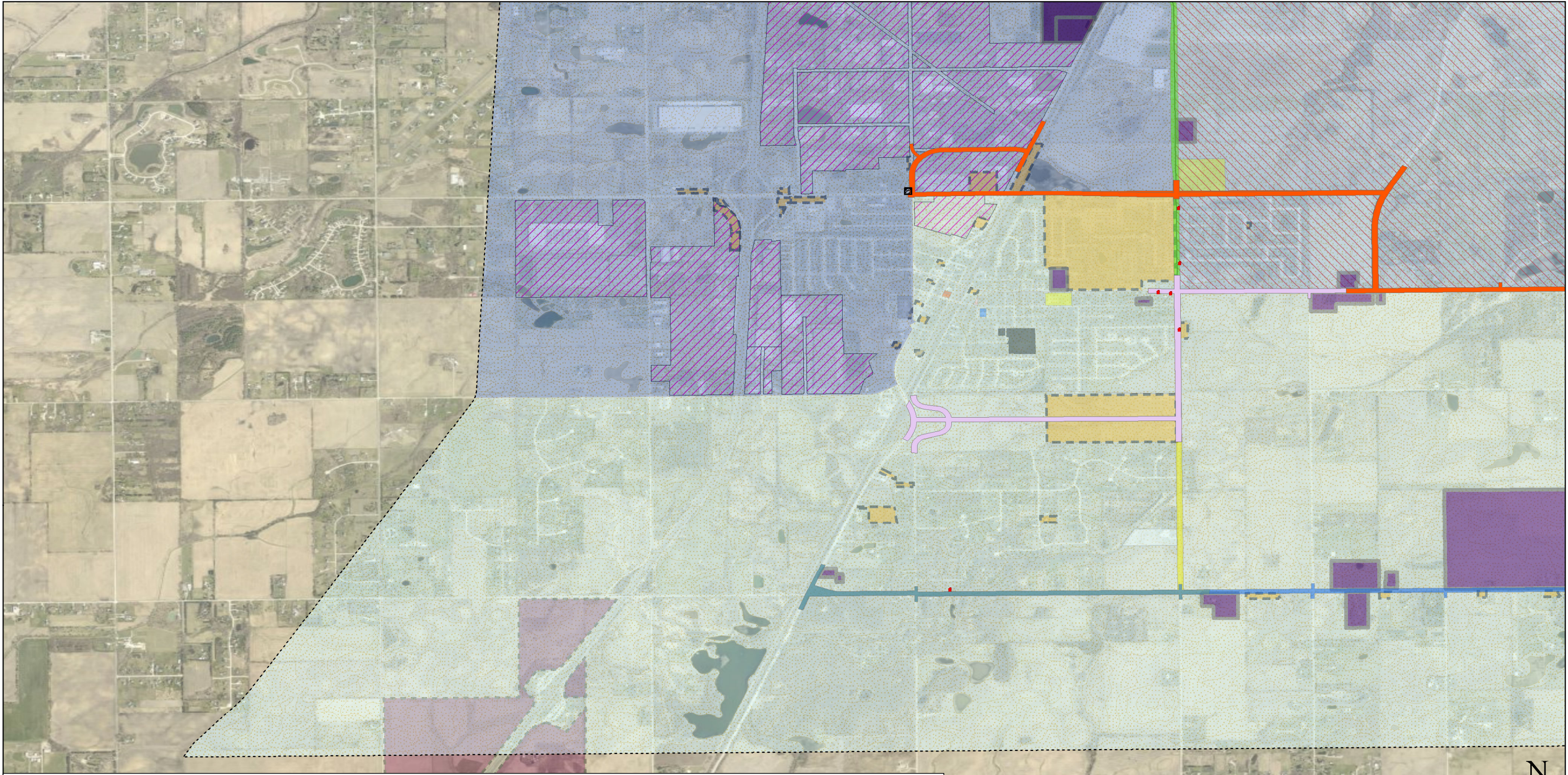
Planning and Environmental
Linkages Study

Appendix D

Environmental Resources Maps







Legend

Project area limits

Crete-Monee North Alternatives

Crete-Monee South Alternatives

Dralle/Crete-Monee Alternatives

Pauling-Goodenow Alternatives

Pauling-Goodenow/Crete-Monee Alternatives

Potentially impacted home

Potentially impacted business

NRHP

Potentially Eligible

Previously Determined Eligible

Limited English Populations

0.0%

>0.0 - 2.0%

>2.0 - 5.0%

>5.0 - 8.0%

EJ communities

Community Facilities

Cemetery

Education

Fire/Emergency

Government

Place of Worship

Police

Post Office

Business Park

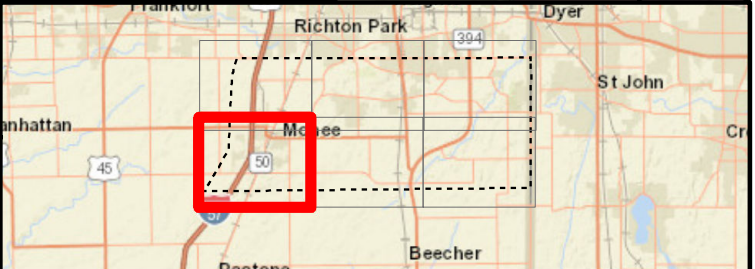
Parcel identified on hazmat databases

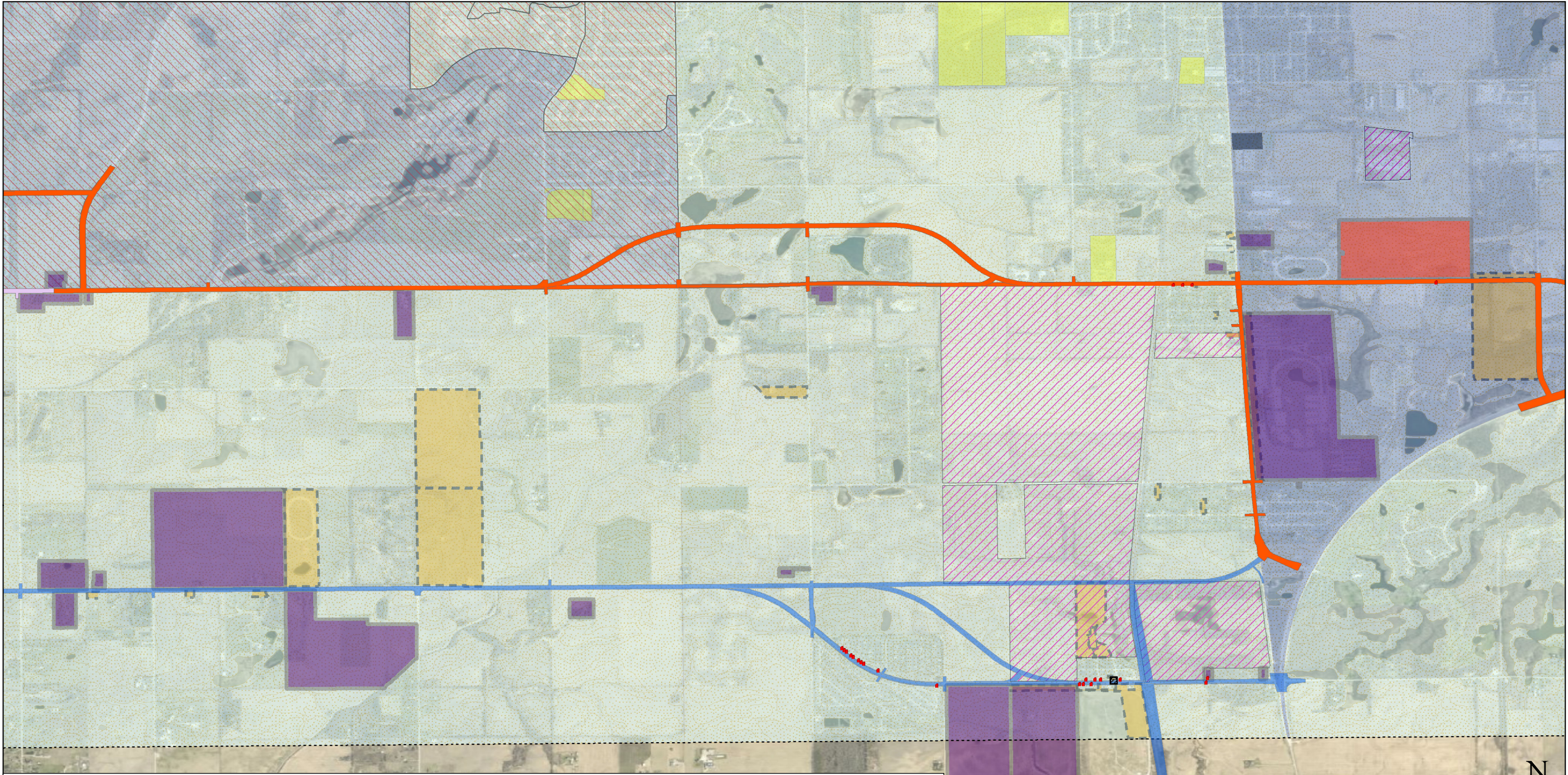
South Suburban Airport (proposed)

Prime Farmland or Farmland of Statewide Importance



Socioeconomic Resources





Legend

Project area limits

Crete-Monee North Alternatives

Crete-Monee South Alternatives

Dralle/Crete-Monee Alternatives

Pauling-Goodenow Alternatives

Pauling-Goodenow/Crete-Monee Alternatives

Potentially impacted home

Potentially impacted business

Potentially Eligible

Previously Determined Eligible

Limited English Populations

0.0%

>0.0 - 2.0%

>2.0 - 5.0%

Community Facilities

EJ communities

Cemetery

Education

Fire/Emergency

Government

Place of Worship

Police

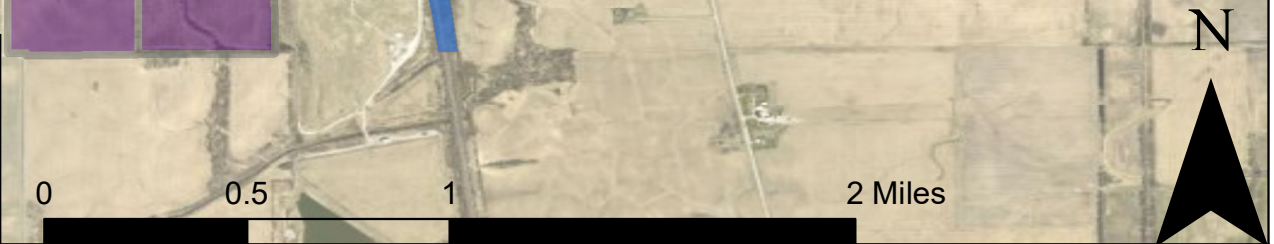
Post Office

Business Park

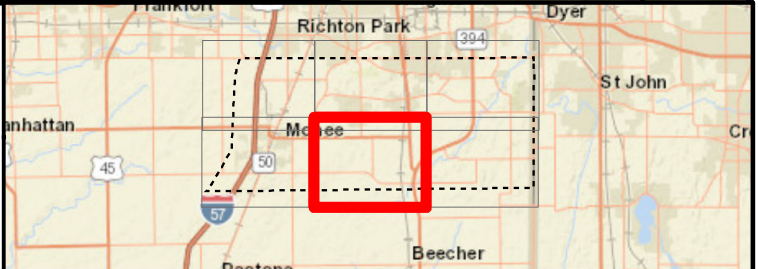
Parcel identified on hazmat databases

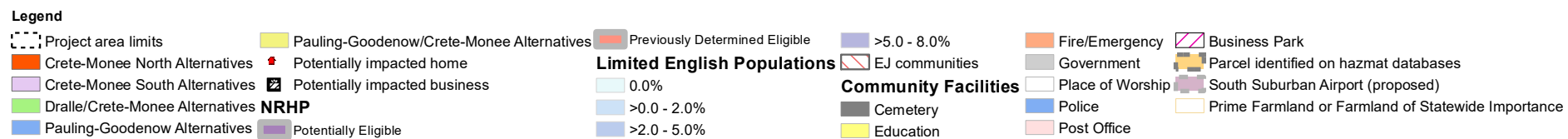
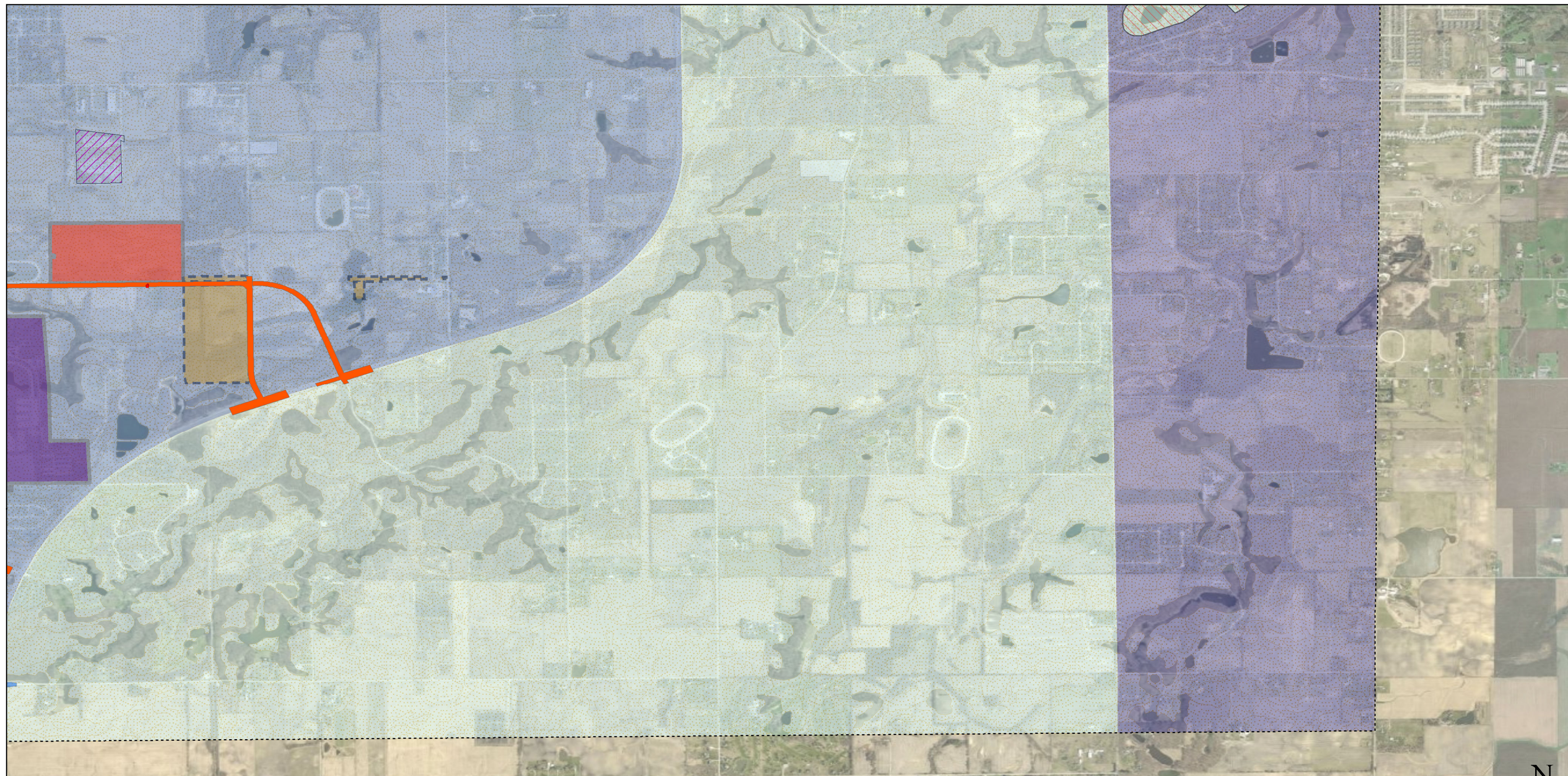
South Suburban Airport (proposed)

Prime Farmland or Farmland of Statewide Importance

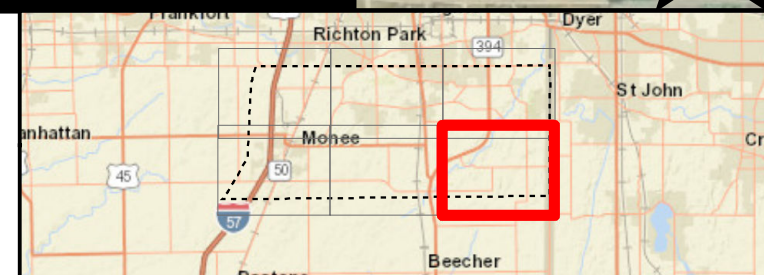


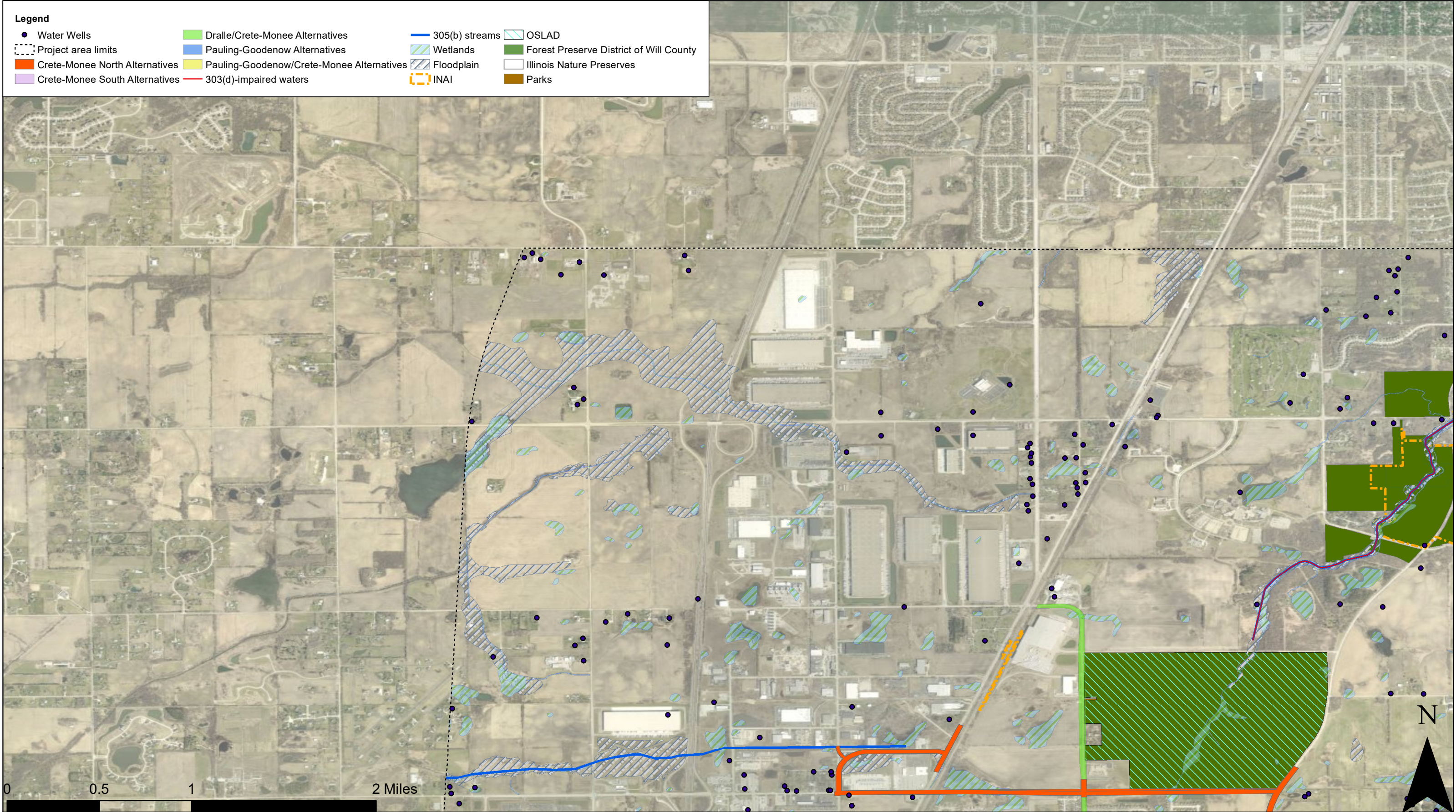
Socioeconomic Resources



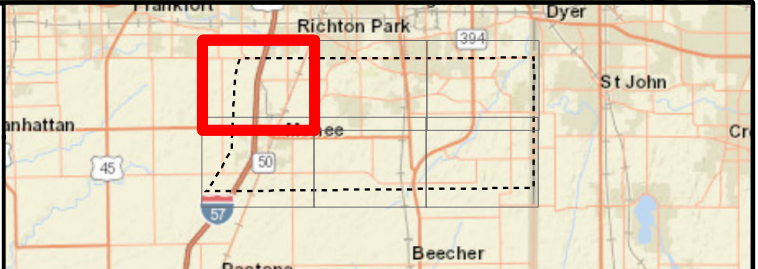


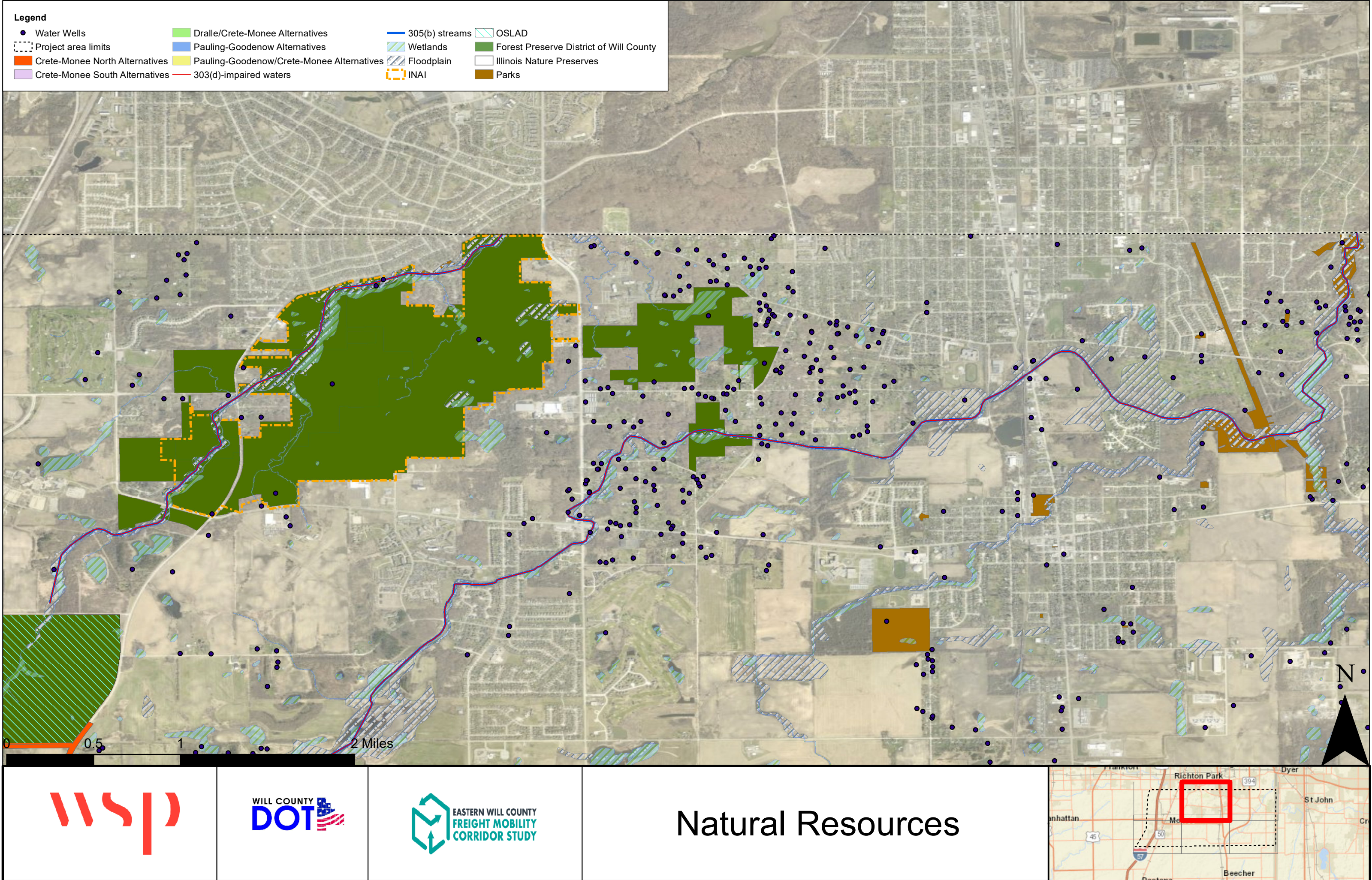
Socioeconomic Resources



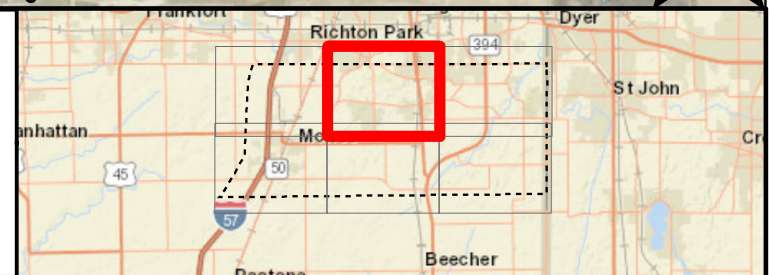


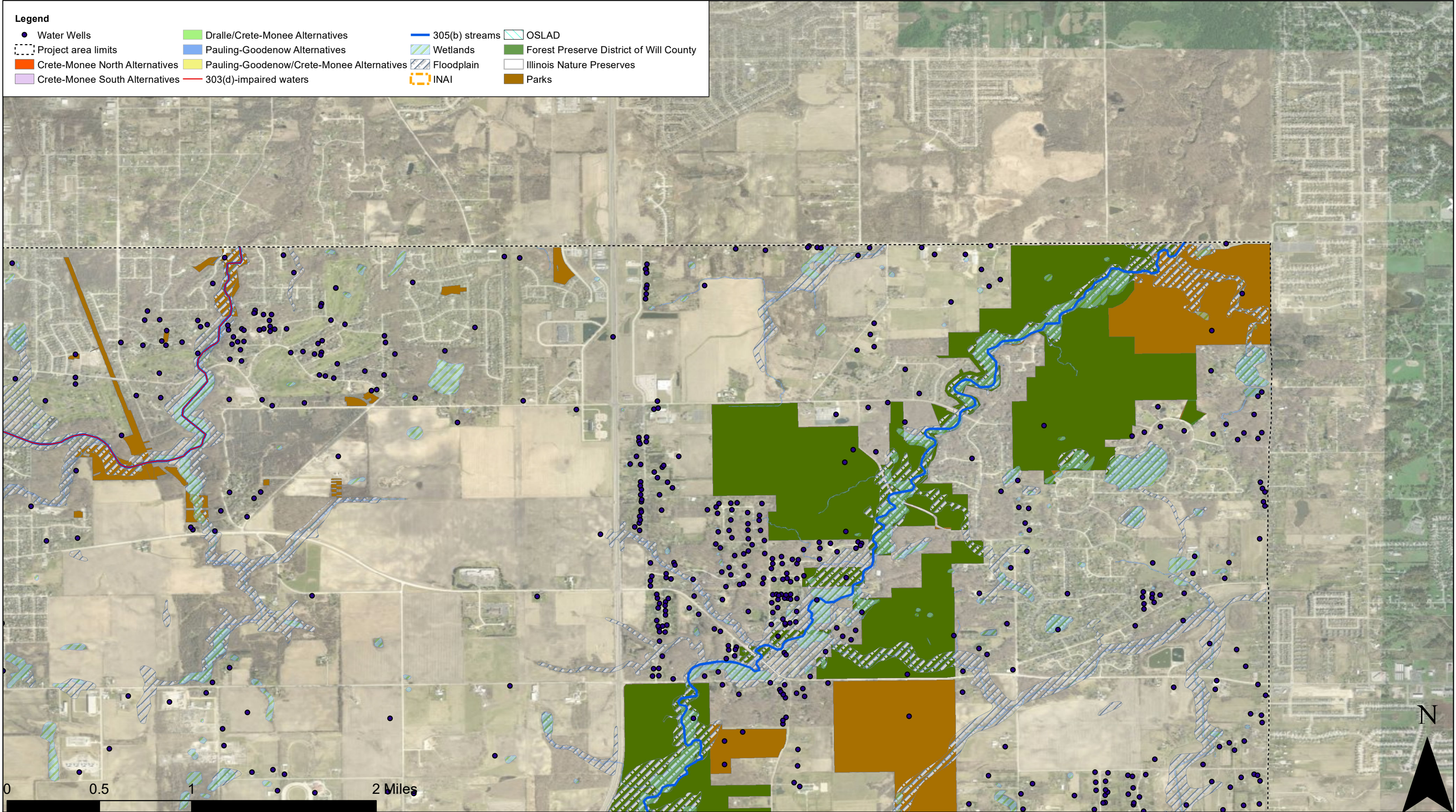
Natural Resources

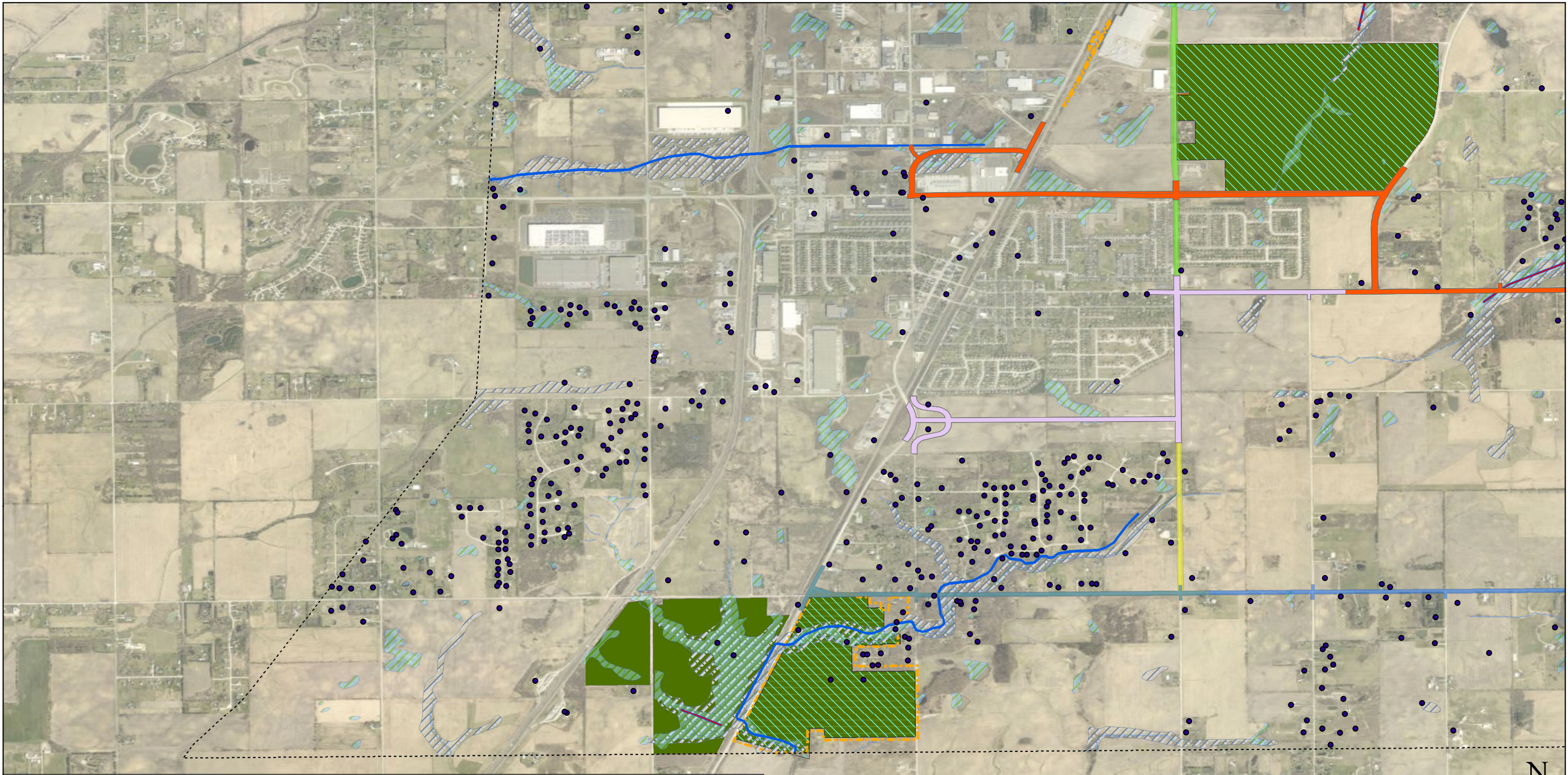




Natural Resources







Legend

- Water Wells
- Project area limits
- Crete-Monee North Alternatives
- Crete-Monee South Alternatives

- Dralle/Crete-Monee Alternatives
- Pauling-Goodenow Alternatives
- Pauling-Goodenow/Crete-Monee Alternatives

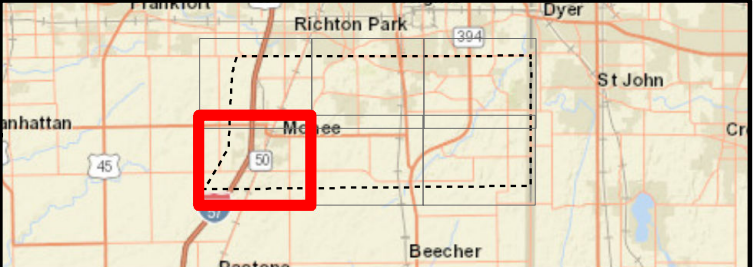
- 305(b) streams
- Wetlands
- Floodplain
- INAI

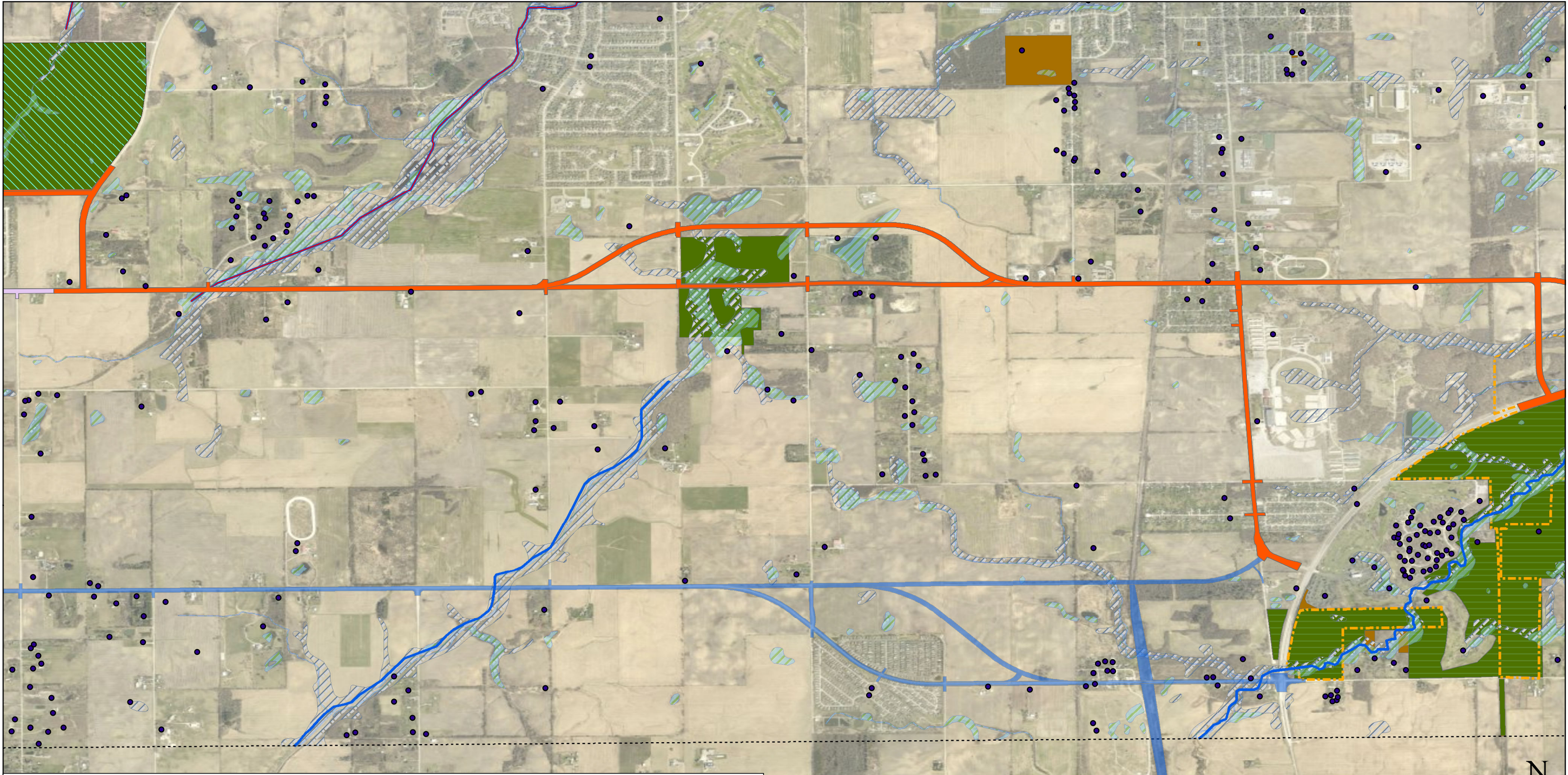
- OSLAD
- Forest Preserve District of Will County
- Illinois Nature Preserves
- Parks

- 303(d)-impaired waters



Natural Resources





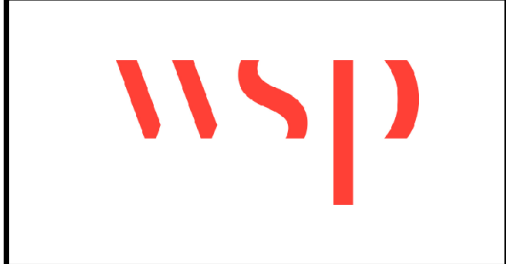
Legend

- Water Wells
- Project area limits
- Crete-Monee North Alternatives
- Crete-Monee South Alternatives

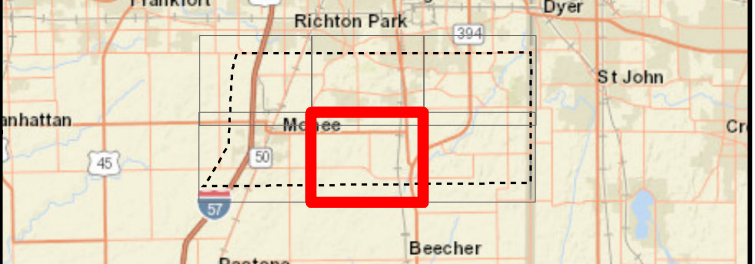
- Dralle/Crete-Monee Alternatives
- Pauling-Goodenow Alternatives
- Pauling-Goodenow/Crete-Monee Alternatives
- 303(d)-impaired waters

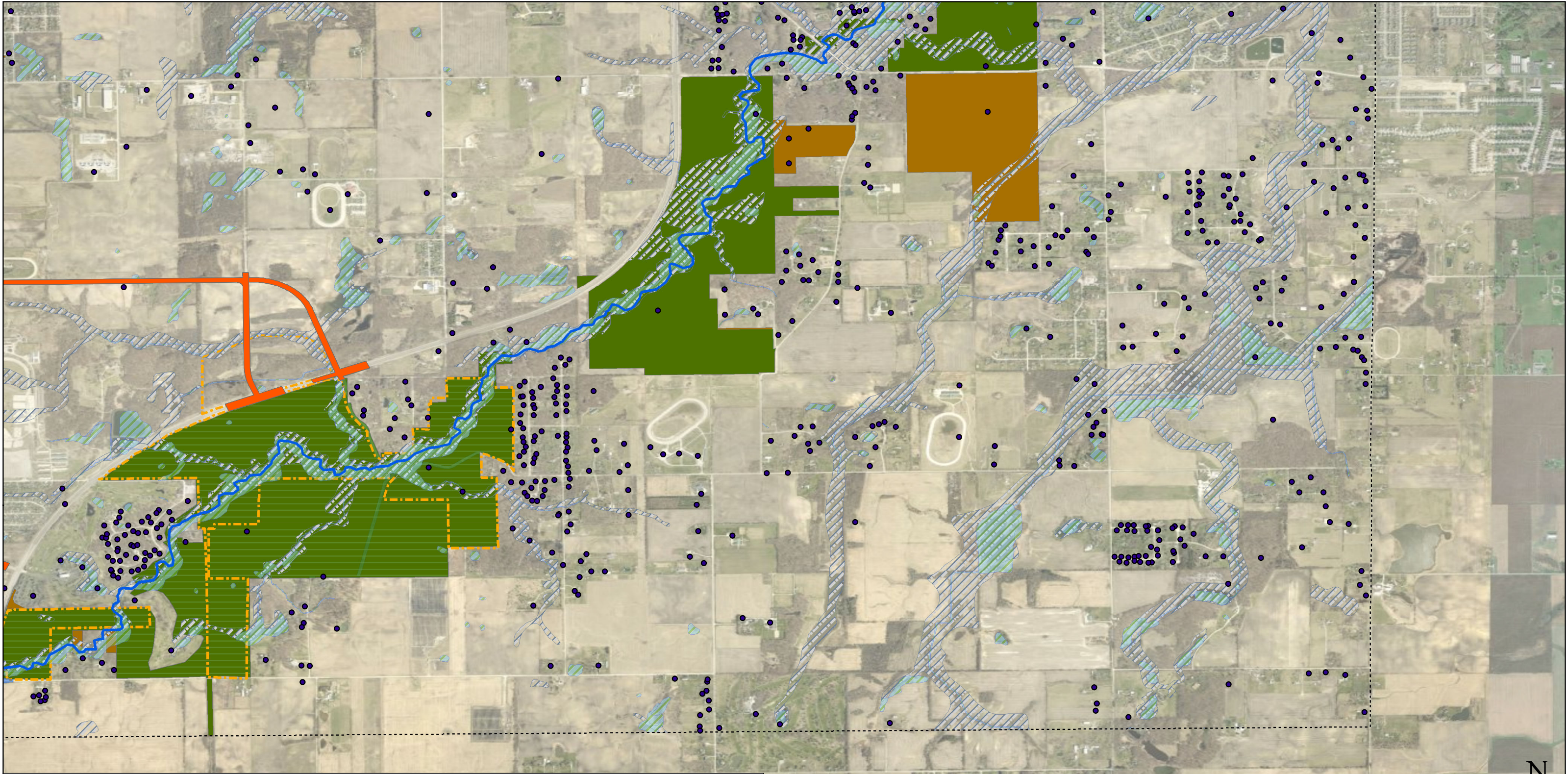
- 305(b) streams
- Wetlands
- Floodplain
- INAI

- OSLAD
- Forest Preserve District of Will County
- Illinois Nature Preserves
- Parks



Natural Resources





Legend

- Water Wells
- Project area limits
- Crete-Monee North Alternatives
- Crete-Monee South Alternatives

- Dralle/Crete-Monee Alternatives
- Pauling-Goodenow Alternatives
- Pauling-Goodenow/Crete-Monee Alternatives
- 303(d)-impaired waters

- 305(b) streams
- Wetlands
- Floodplain
- INAI

- OSLAD
- Forest Preserve District of Will County
- Illinois Nature Preserves
- Parks



Natural Resources

